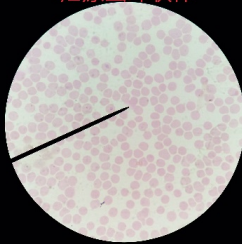


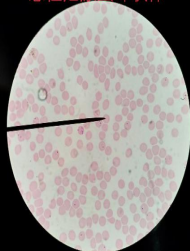
疟原虫卵囊



疟原虫环状体



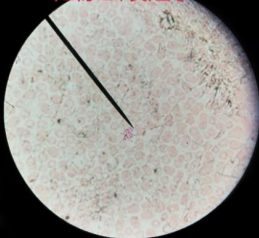
恶性疟原虫环状体



疟原虫滋养体



疟原虫裂殖子



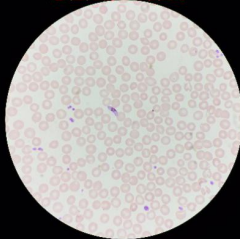
疟原虫雌配子



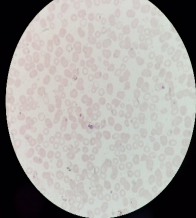
疟原虫雄配子



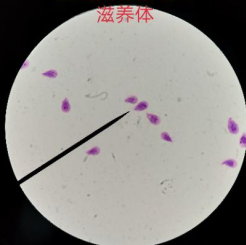
恶性疟原虫雌配子



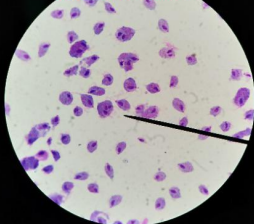
三日疟原虫裂殖体



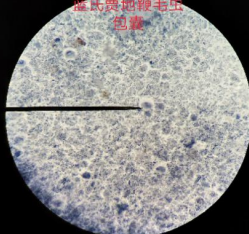
蓝氏贾地鞭毛虫
滋养体



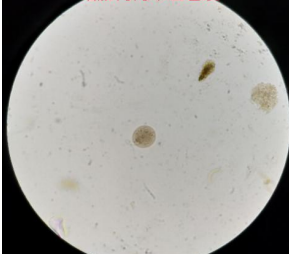
阴道毛滴虫滋养体



蓝氏贾地鞭毛虫
包囊



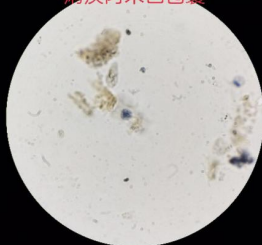
结肠内阿米巴包囊



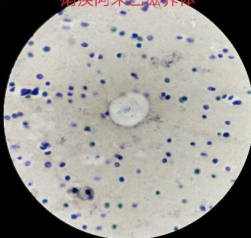
痢疾阿米巴包囊

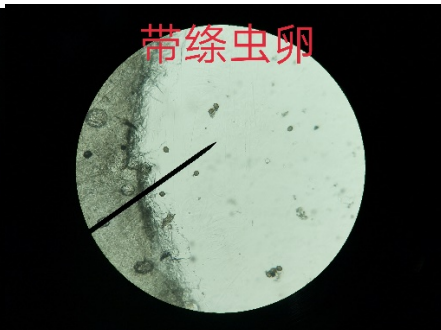
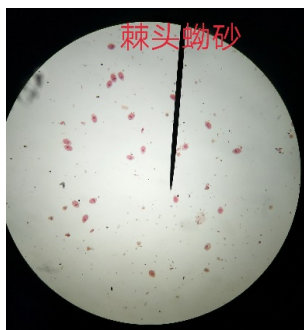
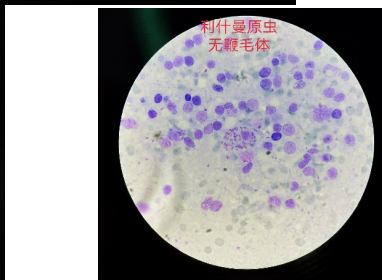
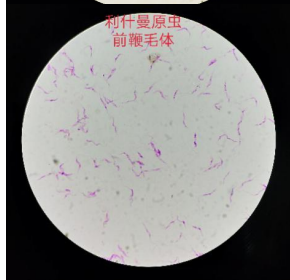
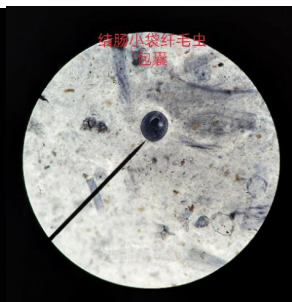
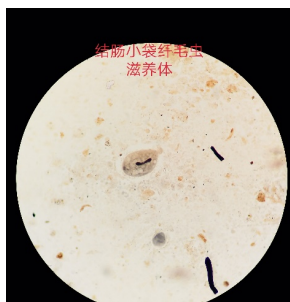


痢疾阿米巴包囊

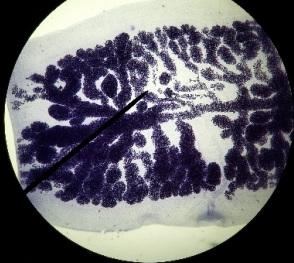


痢疾阿米巴滋养体





猪带绦虫孕节



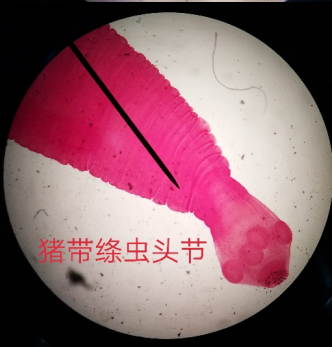
猪带绦虫孕节



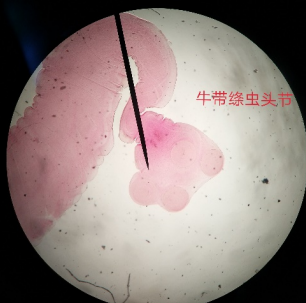
牛带绦虫孕节



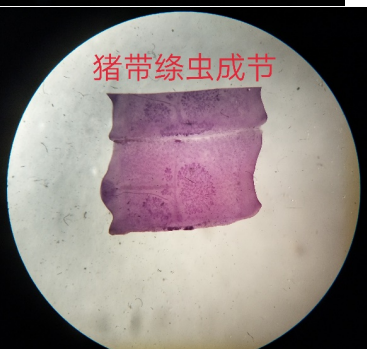
猪带绦虫头节



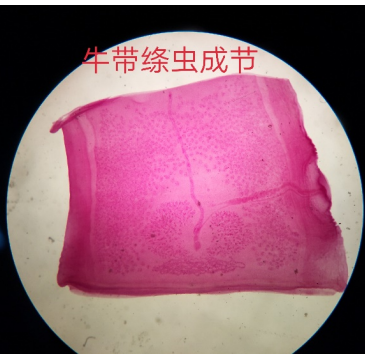
牛带绦虫头节



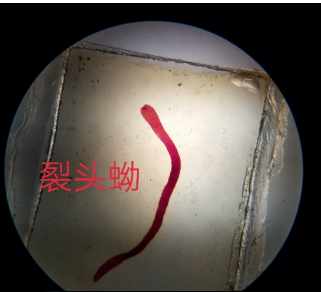
猪带绦虫成节



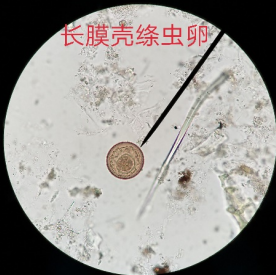
牛带绦虫成节



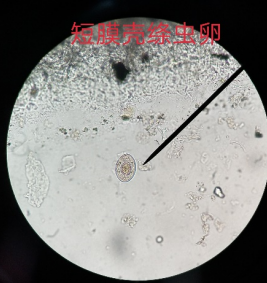
裂头蚴



长膜壳绦虫卵



短膜壳绦虫卵



蚊口器



按蚊幼虫

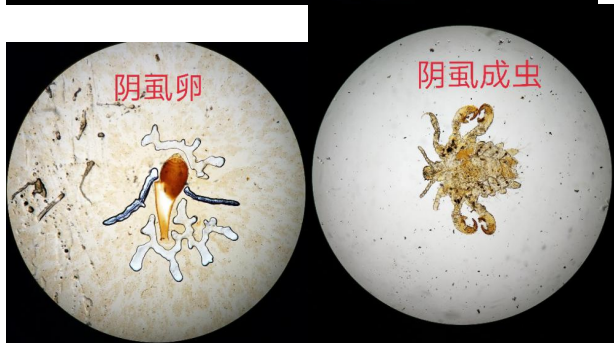
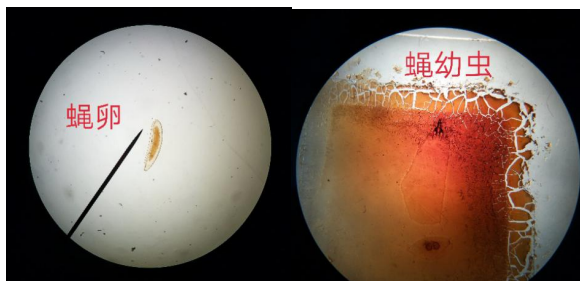


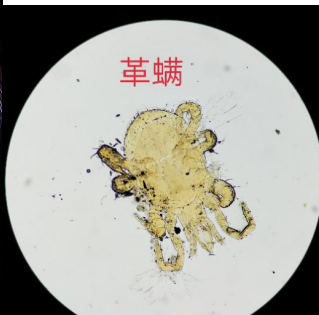
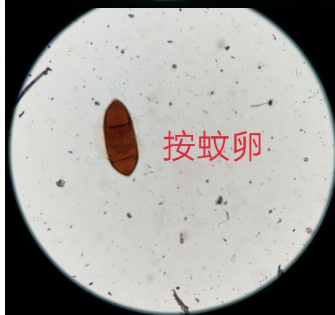
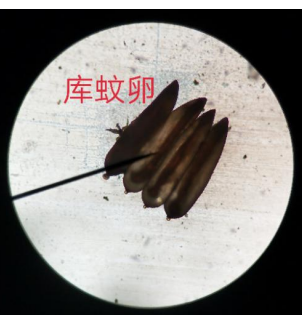
库蚊幼虫

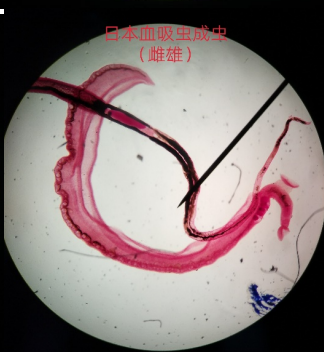
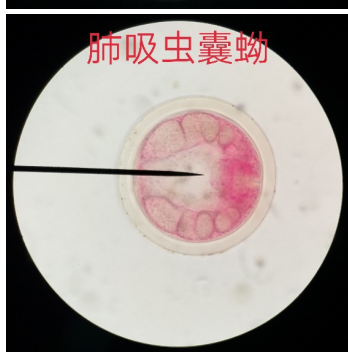
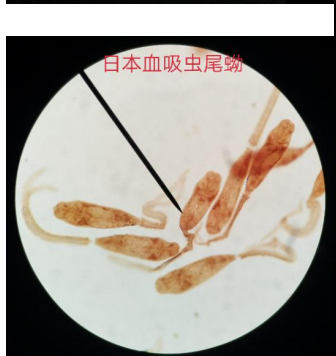
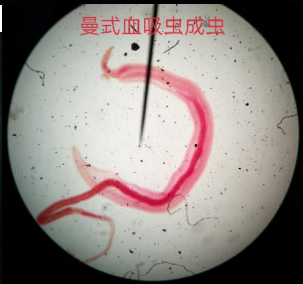
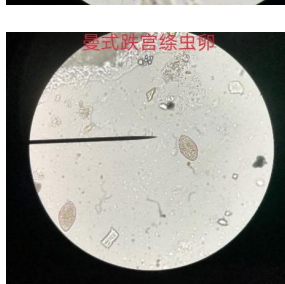
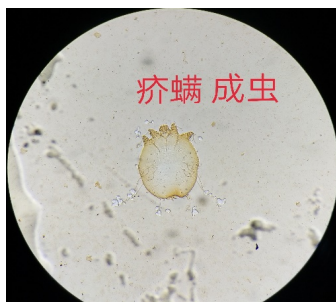


伊蚊幼虫

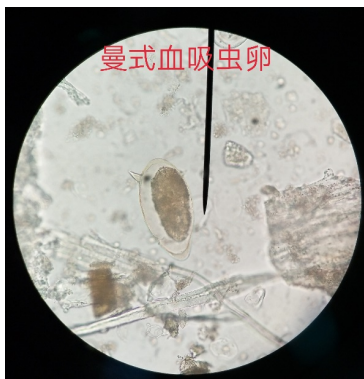




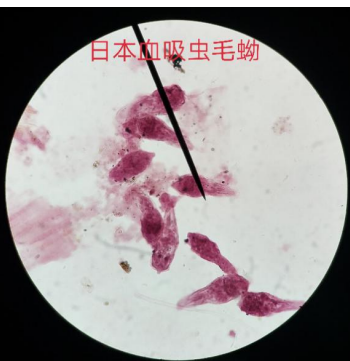




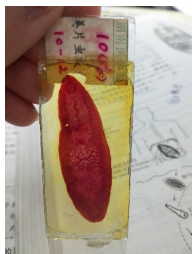
曼式血吸虫卵



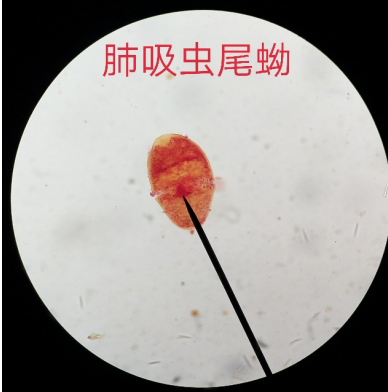
日本血吸虫毛蚴



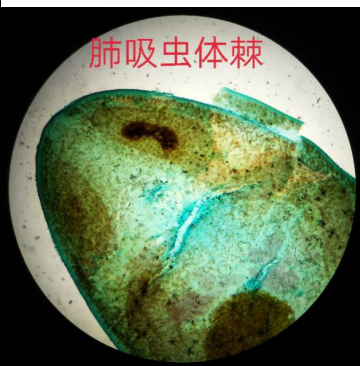
卫氏肺吸虫成虫



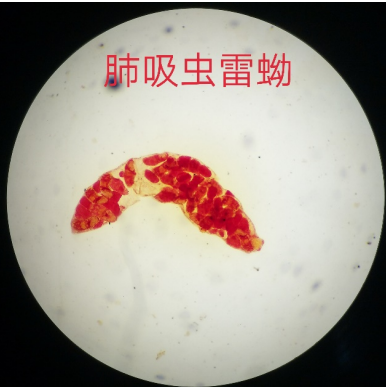
肺吸虫尾蚴



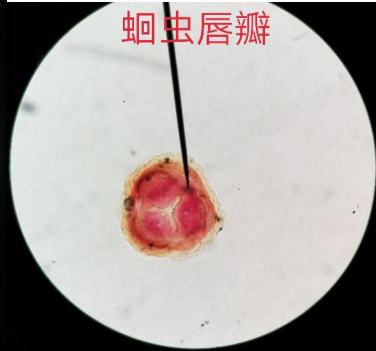
肺吸虫体棘



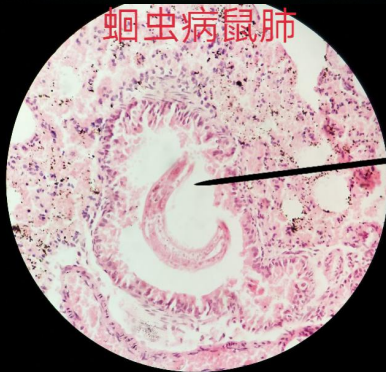
肺吸虫雷蚴



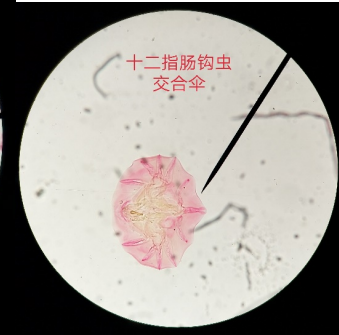
蛔虫唇瓣



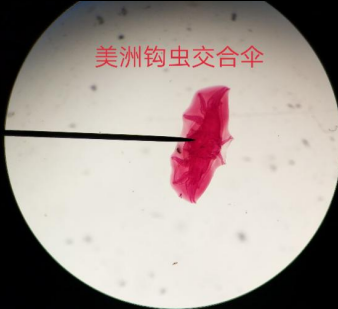
蛔虫病鼠肺



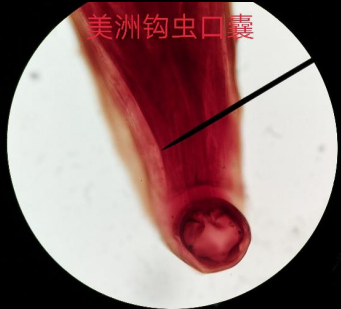
十二指肠钩虫
交合伞

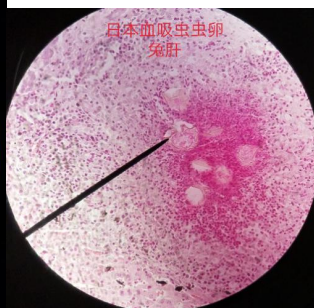
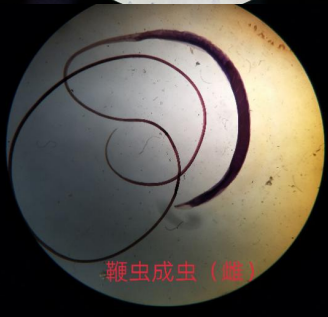
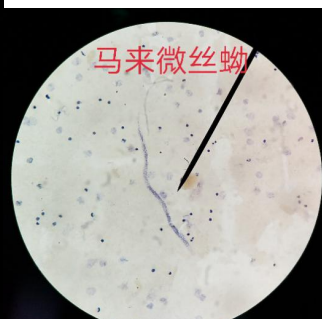
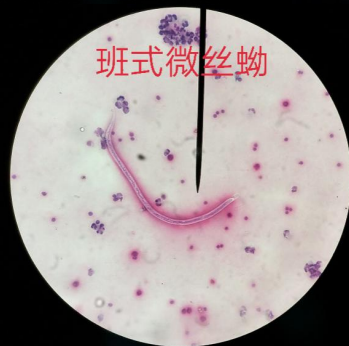
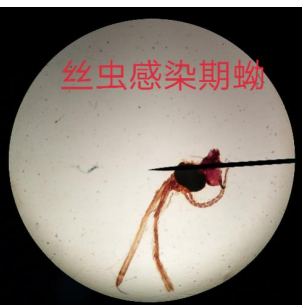
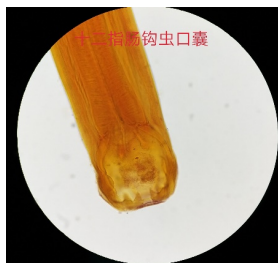


美洲钩虫交合伞

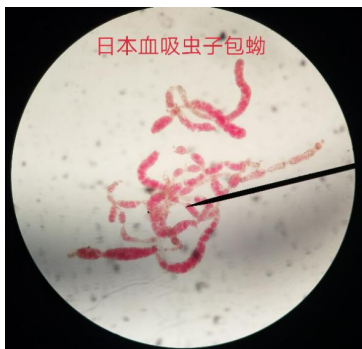


美洲钩虫口囊

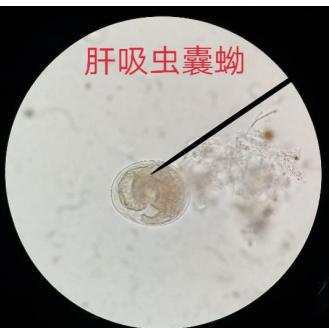




日本血吸虫包蚴



肝吸虫囊蚴



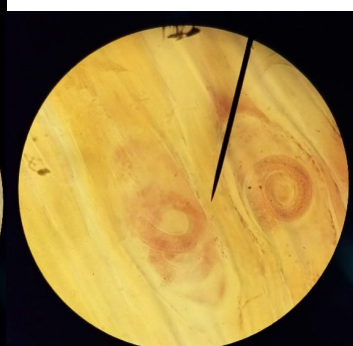
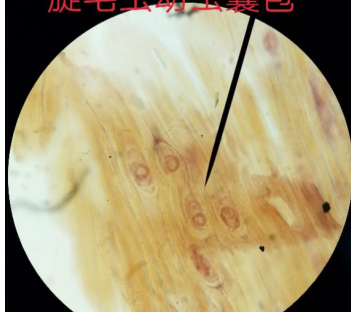
钩虫卵



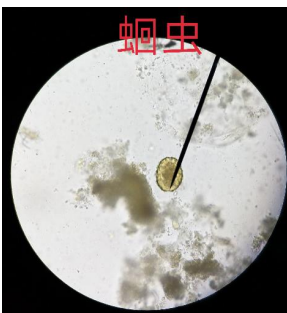
班式微丝蚴



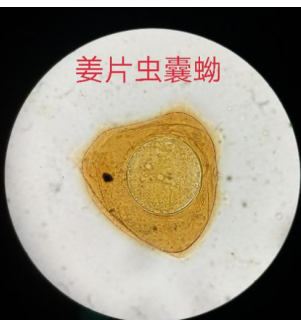
旋毛虫幼虫囊包



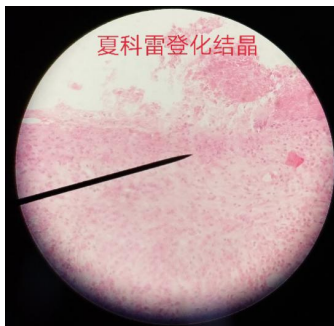
蛔虫



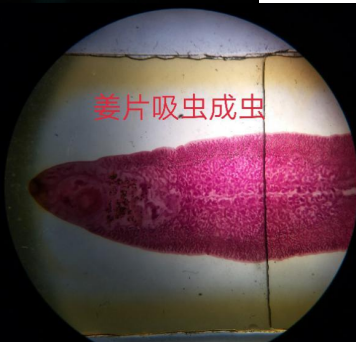
姜片虫囊蚴



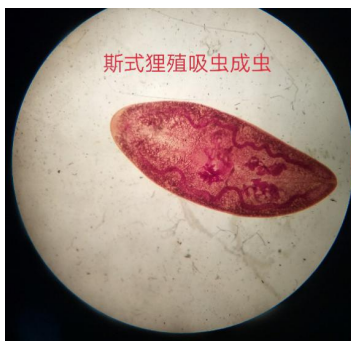
夏科雷登化结晶



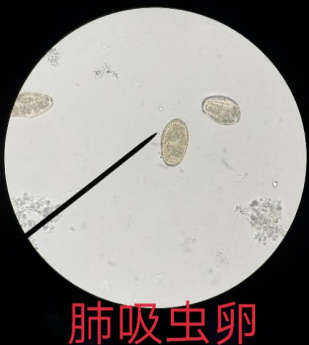
姜片吸虫成虫



斯式狸殖吸虫成虫



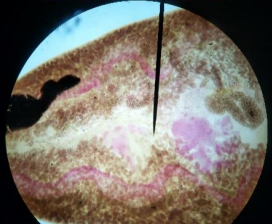
肺吸虫卵



斯式并殖吸虫成虫



卫式并殖吸虫成虫



肝吸虫成虫



肝吸虫卵



姜片虫卵





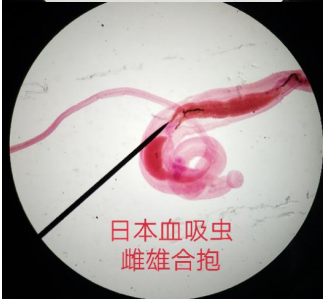
日本血吸虫虫卵



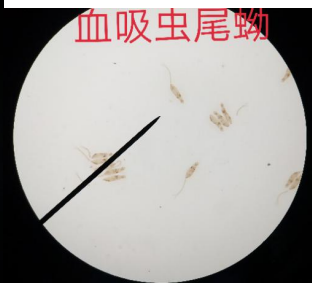
日本血吸虫雌虫



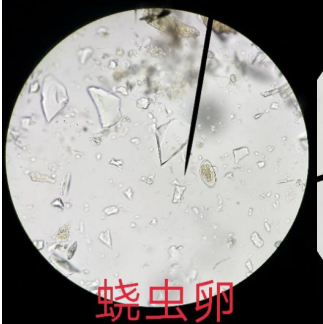
日本血吸虫雄虫



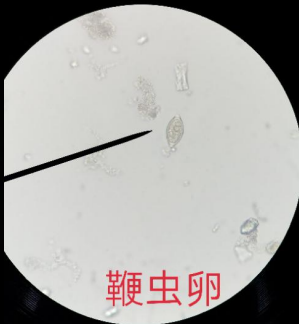
日本血吸虫
雌雄合抱



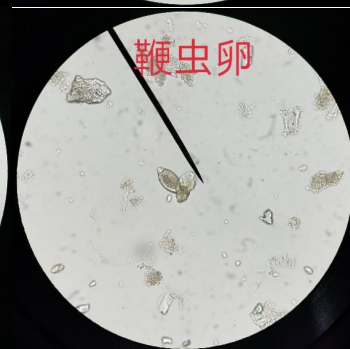
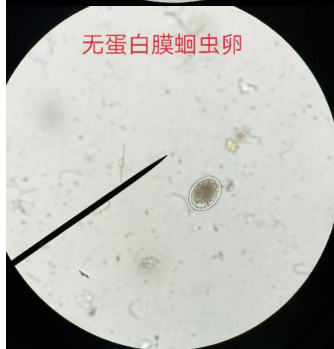
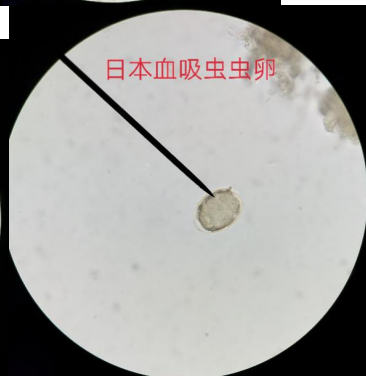
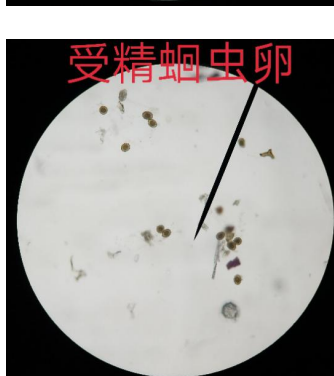
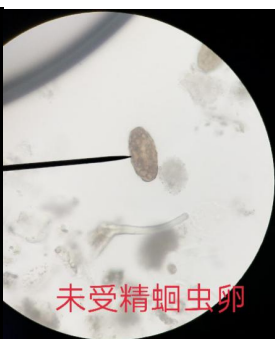
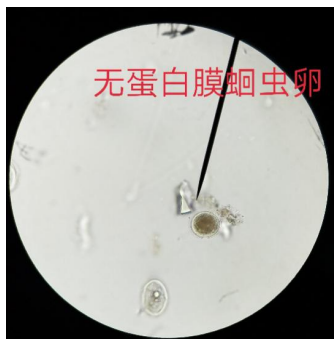
血吸虫尾蚴

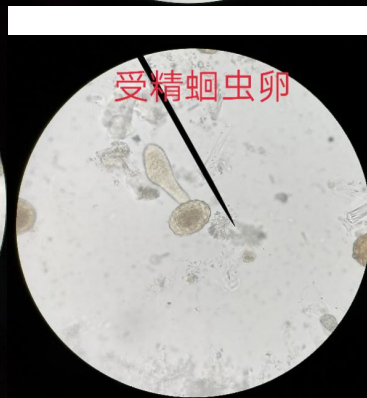
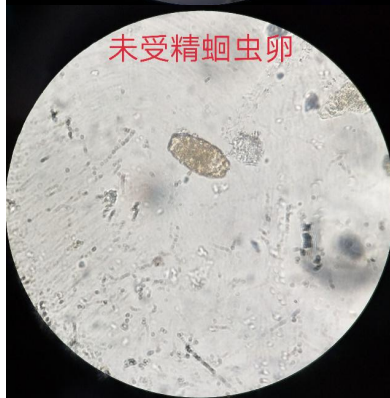
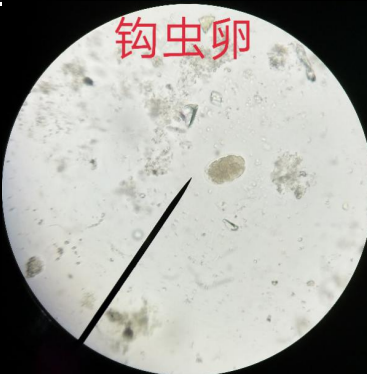
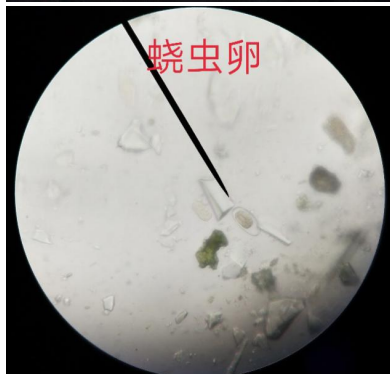
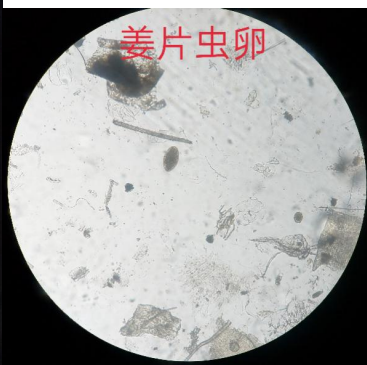
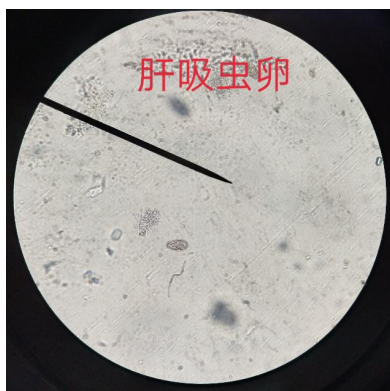


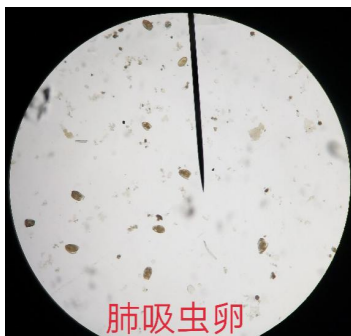
蛲虫卵



鞭虫卵







肺吸虫卵

肝吸虫卵，伊蚊成虫，肝吸虫虫卵，姜片虫虫卵，蛲虫虫卵，受精蛔虫卵，牛带绦虫字节，间日疟原虫环状体，钩虫卵

肝吸虫，肺吸虫，间日疟原虫环状体，钩虫卵，布氏姜片虫卵，牛带绦虫字节，伊蚊成虫，日本血吸虫成虫

以上是十二张和十张的考题

区分考题

肝吸虫，肺吸虫，间日疟原虫环状体，钩虫卵，布氏姜片虫卵，牛带绦虫字节，库文成虫，十二指肠钩虫成虫

聊天记录

肝吸虫

肺吸虫

卵

蛲虫卵

钩虫卵

未受精蛔虫卵

间日疟原虫考了

库蚊的成虫考了

绦虫应该能考一个

还有一个线虫是拿放大镜看的，你们桌子上应该能有一个放大镜

有个日本血吸虫卵的

很标准的片

记特征就好

我们没考，不过有考的

像疥螨

应该也会考到

十二指肠钩虫成虫浸润标本，钉螺，姜片虫虫卵，微丝蚴，猪带绦虫孕节，卫氏并殖吸虫虫卵，未受精蛔虫卵，间日疟红内期雌配子体，

精卫的

蛲虫卵，蛔虫卵，钩虫卵，姜片虫卵，肺吸虫卵，血吸虫卵，猪带绦虫孕节，蓝氏贾第鞭毛虫包囊都考了，标本有一个不知道是不是蚊子的，还有一个猪带绦虫尾蚴