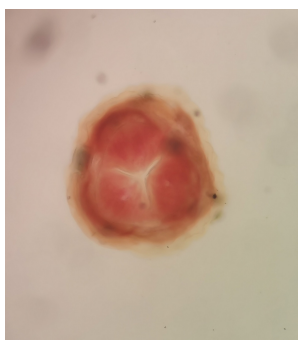




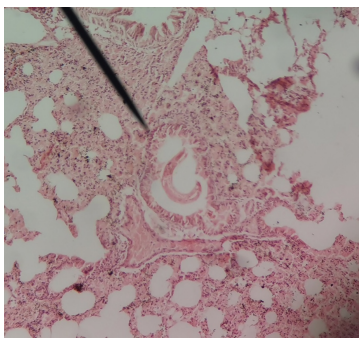
未受精蛔虫卵



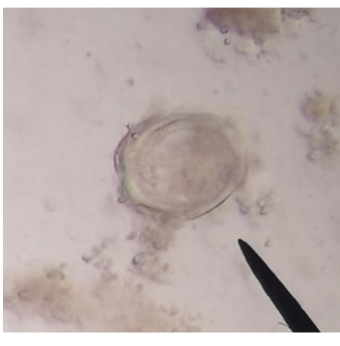
感染性蛔虫卵



蛔虫唇瓣



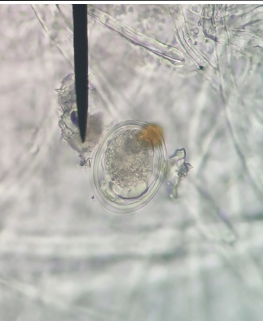
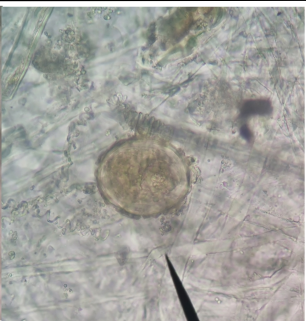
蛔虫病鼠肺



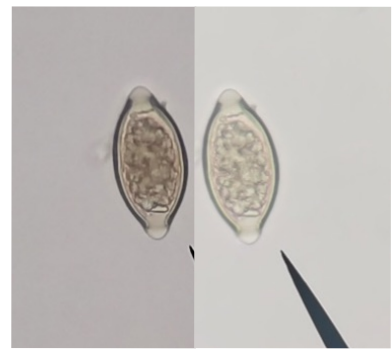
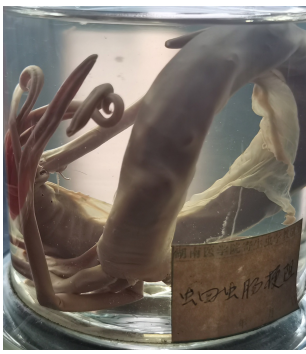
生理盐水涂片法
观察蛔虫卵



受精蛔虫卵



无蛋白膜蛔虫卵



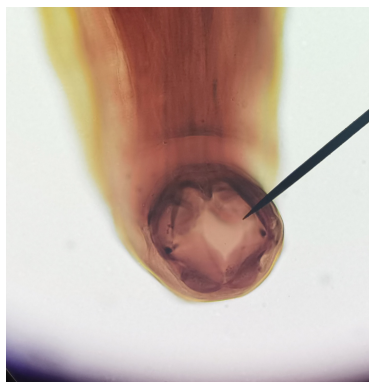
鞭虫卵



鞭虫成虫



钩虫卵



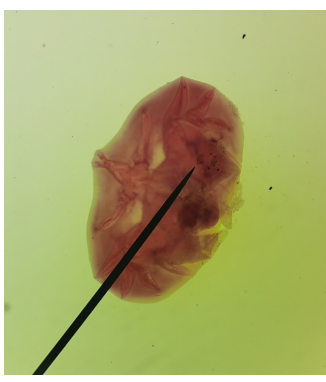
美洲钩虫口囊



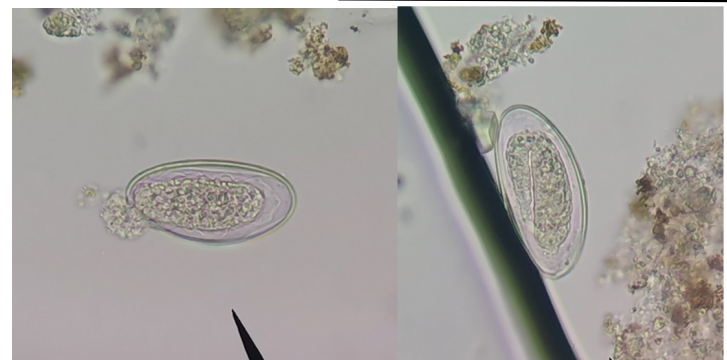
十二指肠钩虫口囊



美洲钩虫交合伞



十二指肠钩虫交合伞



蛲虫卵



蛲虫成虫 (雄性)



马来微丝蚴



班氏微丝蚴



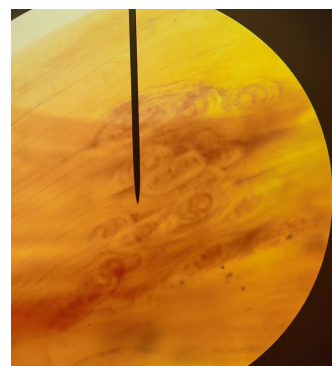
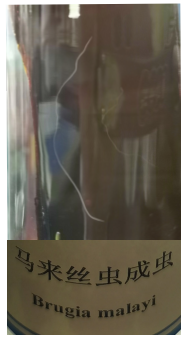
丝虫感染期蚴



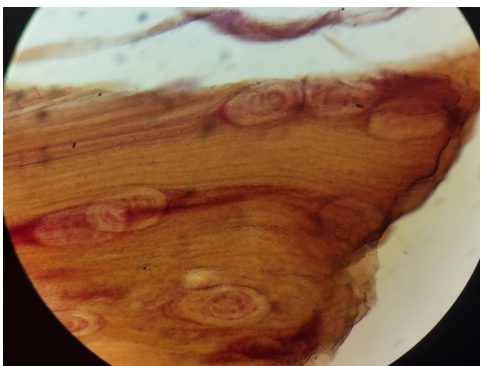
马来微丝蚴



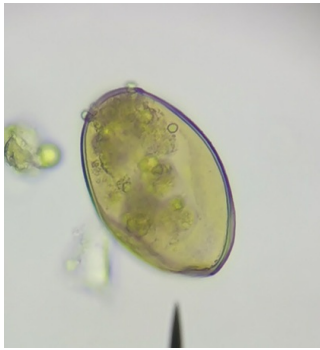
班氏微丝蚴



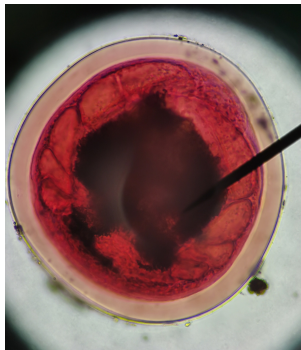
旋毛虫幼虫囊包 (10倍)



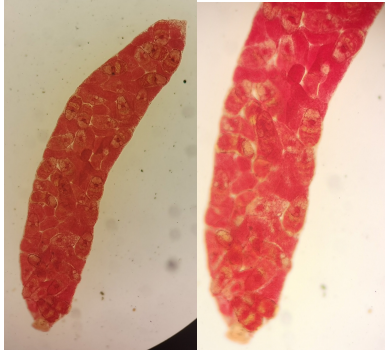
旋毛虫幼虫



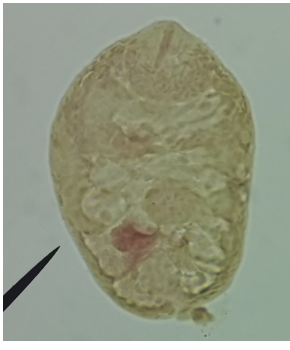
肺吸虫卵



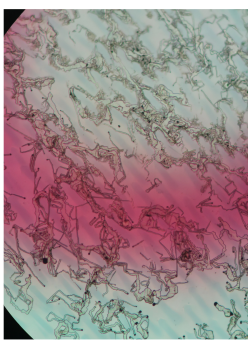
肺吸虫囊蚴



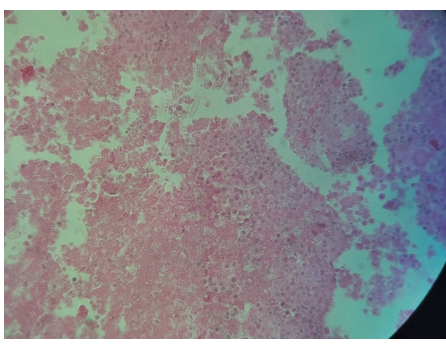
肺吸虫雷蚴



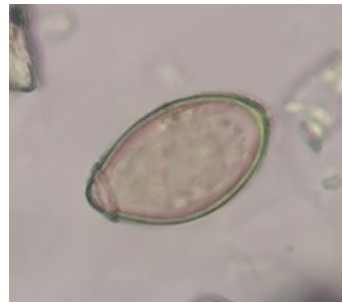
肺吸虫尾蚴



肺吸虫体棘



夏科雷登氏结晶



肝吸虫卵



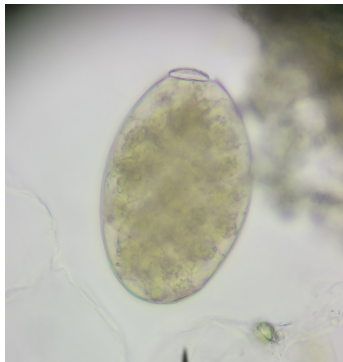
肝吸虫成虫



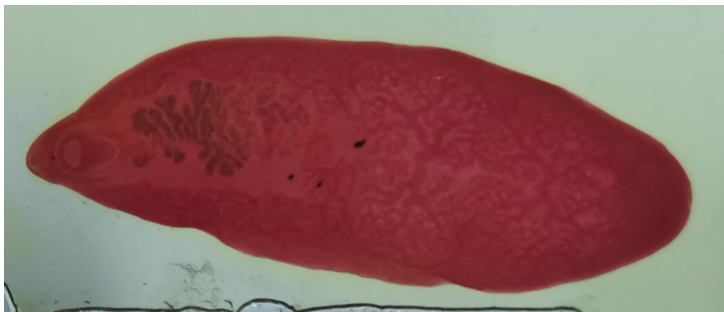
肝吸虫囊蚴



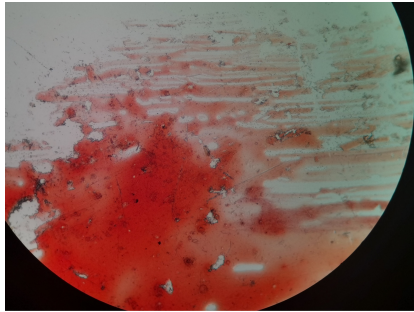
肝吸虫病理标本



姜片虫卵



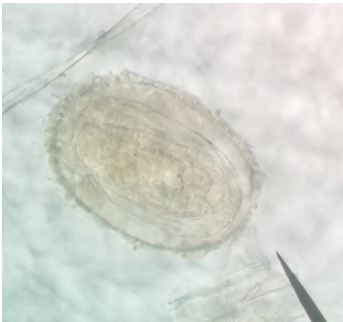
姜片虫成虫



姜片虫囊蚴



姜片虫成虫



日本血吸虫卵



血吸虫尾蚴



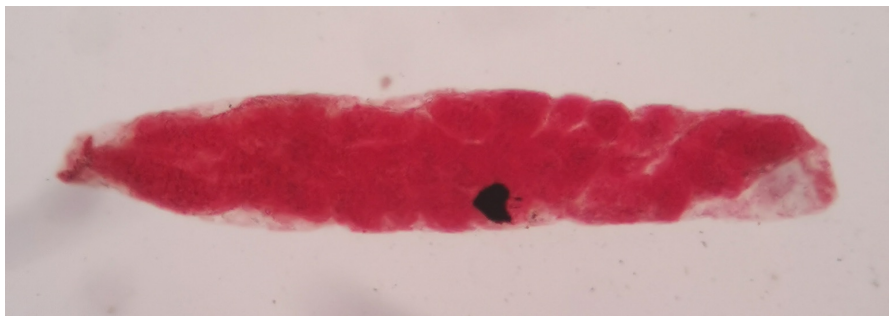
日本血吸虫成虫
(雌雄合抱, 4倍)



日本血吸虫成虫
(雄虫)



日本血吸虫成虫
(雌雄合抱)



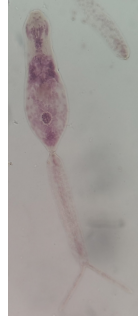
日本血吸虫母胞蚴



日本血吸虫子胞蚴



日本血吸虫毛蚴



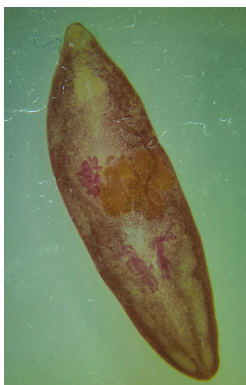
日本血吸虫尾蚴



卫氏并殖吸虫成虫



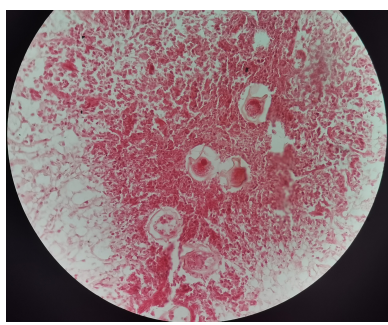
卫氏并殖吸虫成虫



斯氏狸殖吸虫成虫



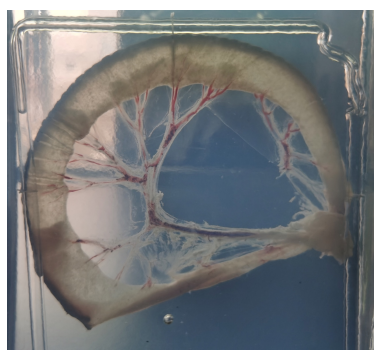
斯氏狸殖吸虫成虫



日本血吸虫病兔肝



血吸虫病兔肝



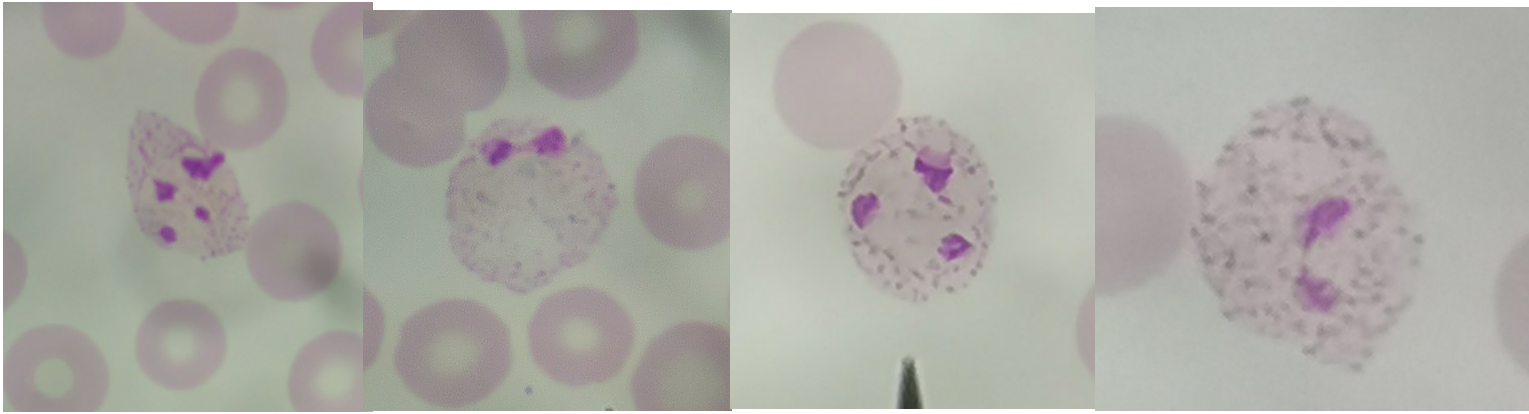
日本血吸虫成虫
寄生于兔肠系膜静脉内



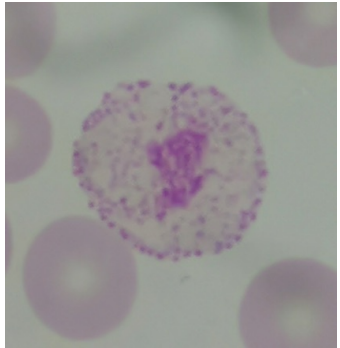
曼氏血吸虫虫卵



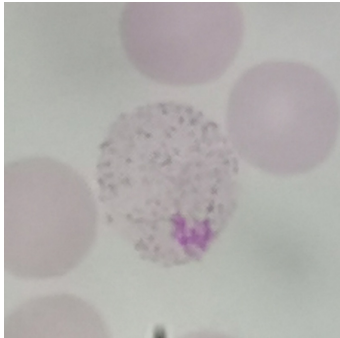
曼氏血吸虫成虫



未成熟裂殖体

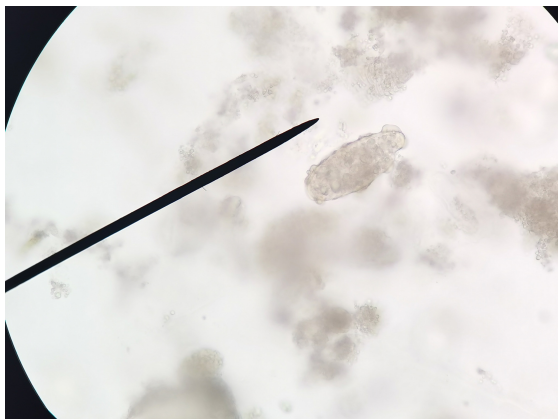


雄配子体



雌配子体

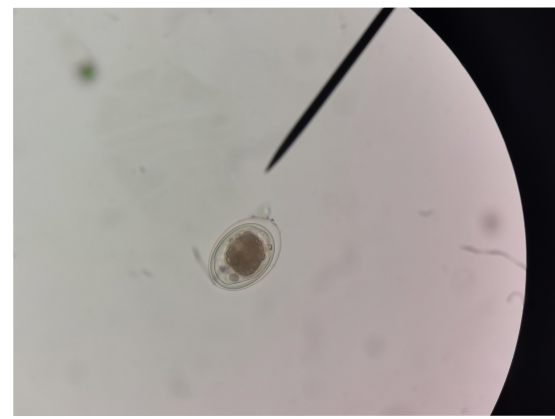
复习



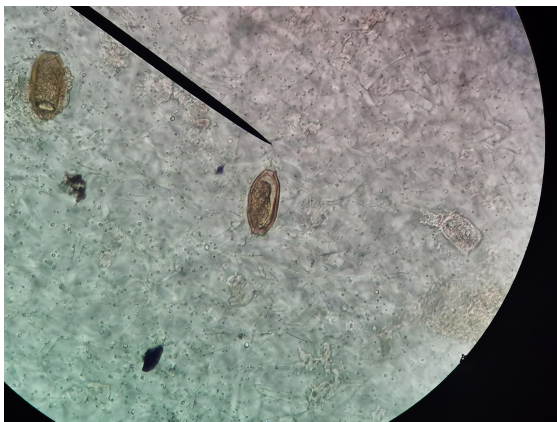
未受精蛔虫卵



受精蛔虫卵



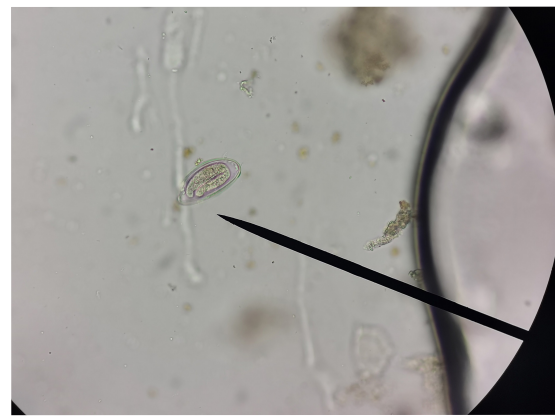
无蛋白膜蛔虫卵



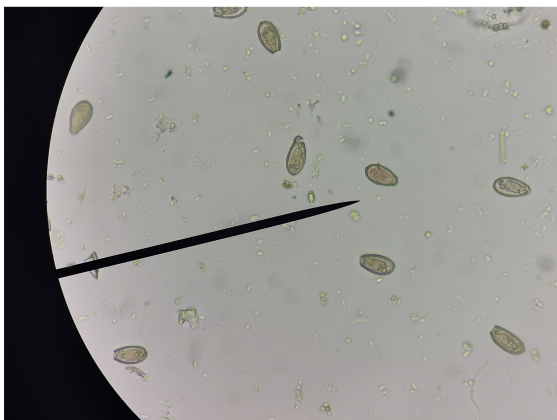
鞭虫卵



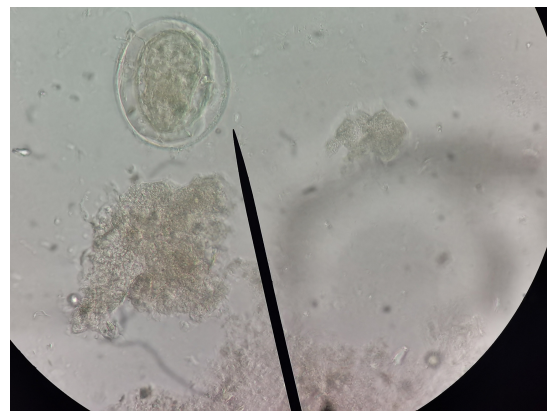
钩虫卵



蛲虫卵



肝吸虫卵



日本血吸虫卵



姜片虫卵